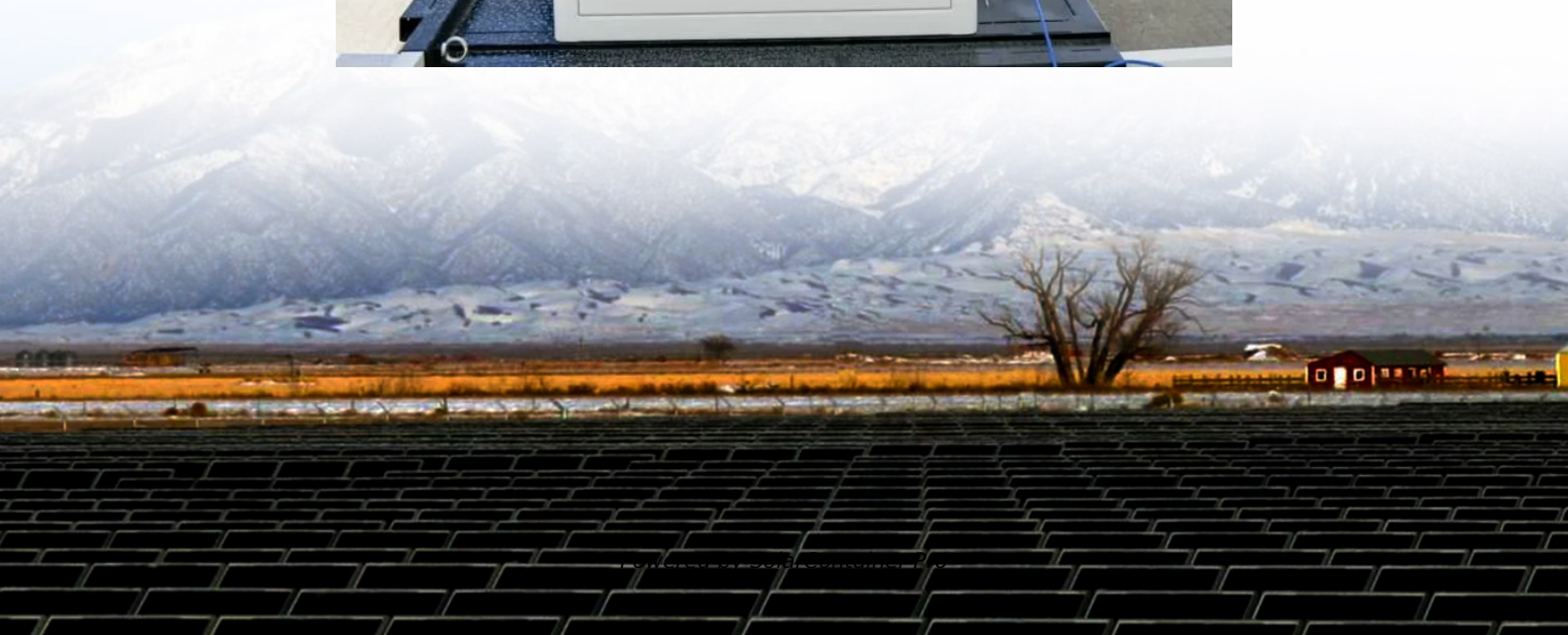


# **340KW monocrystalline photovoltaic panel**





## Overview

---

The 96-cell HIT® N340 solar panel provides a powerful combination of increased module efficiency, energy savings and durable long-term performance. Featuring a 20.3 module efficiency and 340 watts per panel.

What is a 320W monocrystalline solar panel?

The 320W monocrystalline solar panel comes with PERC technology. Monocrystalline solar panels are a type of solar panels, and this specific one has a capacity of 320 watts. The main difference between monocrystalline solar cells and PERC solar cells is the passivation layer added on the backside of the solar cell.

What is a 300W monocrystalline solar panel?

A 300W monocrystalline solar panel is a lightweight solar panel that enhances module efficiency while minimizing its weight. It is the perfect option for any off-grid solar system, especially for transportation applications such as RVs and boats. This monocrystalline solar panel features a lightweight substrate and laminate, making it suitable for outdoor applications.

What is a N340 solar panel?

Featuring a 20.3 module efficiency and 340 watts per panel, N340 delivers an advanced renewable energy source with zero emissions for any home. A temperature coefficient rating of  $-0.258\%/^{\circ}\text{C}$ , one of the lowest in the world, helps generate greater electricity output on the hottest days. Higher power output and greater energy yields.



## 340KW monocrystalline photovoltaic panel

---



### [340W Monocrystalline Solar Panel - Atwin Engineering](#)

This 340w solar panel battery charger has a corrosion-resistant aluminum frame for extended outdoor use, allowing the panels to last for decades as well as withstand high winds. Features ...

[WhatsApp](#)

### [Photonomy 700W Monocrystalline Solar Panel](#)

Photonomy 700W A+ grade monocrystalline solar panels with industry-leading 23% conversion efficiency. Equipped with PERC, MBB and Half Cut Cell technology. Suitable for off-grid and ...

[WhatsApp](#)



### [SLD Tech ST-340Q-24M 340-Watt, 24-Volt Solar Panel](#)

The SLD Tech ST-340Q-24M delivers 340 watts of high-efficiency monocrystalline solar power in a robust 60-cell format. Designed for 24V systems, it features advanced PID resistance, ...

[WhatsApp](#)

## Maximizing Efficiency: The Advantages of Monocrystalline Solar Panels

When choosing panels, consider the efficiency ratings, installation needs, and balance the cost against performance benefits. Understanding



Monocrystalline Solar Panel ...

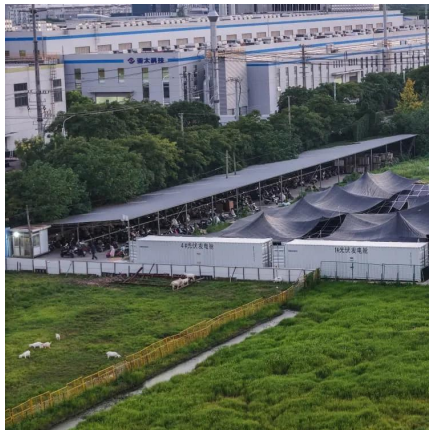
[WhatsApp](#)



### Byd 1kw Photovoltaic Module 340w Mono 5bb Half Cell 120 ...

Byd 1kw Photovoltaic Module 340w Mono 5bb Half Cell 120 Dimensions 1684\*1002\*35mm Weight 18.6kg 25 Years Warranty Solar Panel, Find Complete Details about Byd 1kw Photovoltaic ...

[WhatsApp](#)



### 340 Watt Solar panels for sale , Prices, dimensions, weight, ...

Region: China Features: High efficiency (high output) / Low Light Irradiance / Monocrystalline / Severe Weather Resistant / Thin film Panel Dimension: 1500x1000x3 mm Inventory: ...

[WhatsApp](#)



### 340watt Monocrystalline solar panel

World-class quality Fully-automated production lines and seamless monitoring of the process and material ensure the quality that the company sets as its benchmark for its sites worldwide. ...

[WhatsApp](#)







### **CID2 Certified 340W Monocrystalline Solar Panel , SLD Tech**

Explore the power of SLD Tech's CID2 certified 340W monocrystalline solar panel. Engineered for reliability and efficiency, our solar panels are designed to thrive in hazardous environments ...

[WhatsApp](#)



### [320 Watt Monocrystalline Solar Panel , Renogy Solar](#)

Primarily used for residential and commercial purposes, rooftop solar power systems are the perfect way to decrease an electric bill. Also great for large off-grid systems, the 320W ...

[WhatsApp](#)

## **Contact Us**

---

For catalog requests, pricing, or partnerships, please visit:  
<https://www.straighta.co.za>