

300kw energy storage power station occupies an area





Overview

What are 250kW 300kW 500KW solar panels used for?

250kW, 300kW and 500kW solar energy storage systems are widely used in house communities, irrigation, villages, farms, hospitals, factories, airports, schools, hotels (holiday homes), farms, remote suburbs, etc. How big are the solar panels on 250kW 300kW 500kW solar plants?

.

How to maintain a 300W portable power station?

With regard to maintenance of a 300w portable power station, it is important to take care of the following points: The battery should be treated as if it were a whole. The main thing to do is to treat the battery as if it were a whole. If you have not already done so, then take care of the battery in a clean and dry place.

What are battery storage power stations?

Battery storage power stations are usually composed of batteries, power conversion systems (inverters), control systems and monitoring equipment. There are a variety of battery types used, including lithium-ion, lead-acid, flow cell batteries, and others, depending on factors such as energy density, cycle life, and cost.

What is the construction process of energy storage power stations?

The construction process of energy storage power stations involves multiple key stages, each of which requires careful planning and execution to ensure smooth implementation.

How many solar panels does a 300kW Solar System use?

300kW solar plant required 507pcs 580w solar panels, total will take up about 1318 m2 (14186 ft2). 500kW solar plant required 832pcs 550w solar panels,



total will take up about 2163 m² (23282 ft²). How much power does a 250kW 300kW 500kW solar system produce?

.

What is Sunway ESS battery energy storage system (BESS)?

Sunway Ess battery energy storage system (BESS) containers are based on a modular design. They can be configured to match the required power and capacity requirements of client's application. Our containerised energy storage system (BESS) is the perfect solution for large-scale energy storage projects.



300kw energy storage power station occupies an area



Sunway 300Kw 500Kw 800Kw 1Mw Battery Container Energy Storage ...

They can be configured to match the required power and capacity requirements of client's application. Our containerised energy storage system (BESS) is the perfect solution for large ...

[WhatsApp](#)

How much land does a pumped storage power station occupy?

A pumped storage power station typically occupies a substantial amount of land, primarily due to the requirements for reservoir creation, access roads, and ancillary infrastructure.

[WhatsApp](#)



Sunway 300Kw 500Kw 800Kw 1Mw Battery Container Energy ...

They can be configured to match the required power and capacity requirements of client's application. Our containerised energy storage system (BESS) is the perfect solution for large ...

[WhatsApp](#)



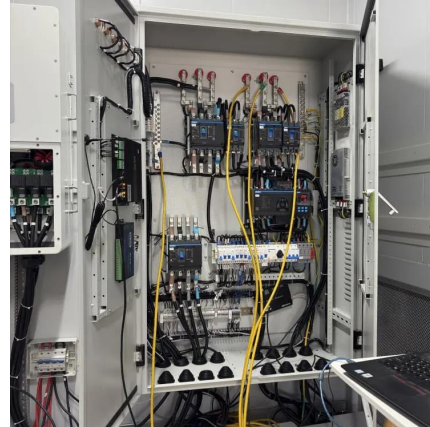
[Battery storage power station - a comprehensive guide](#)

The guide covers the construction, operation, management, and functionalities of these power stations, including their contribution to grid



stability, peak shaving, load shifting, and backup
...

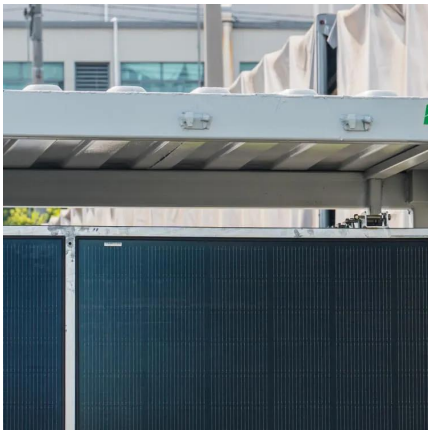
[WhatsApp](#)



Building an Energy Storage Power Station: Key Considerations ...

These projects prove that with smart planning, energy storage power stations aren't just feasible - they're game-changers. Now, who's ready to break ground on the next big one?

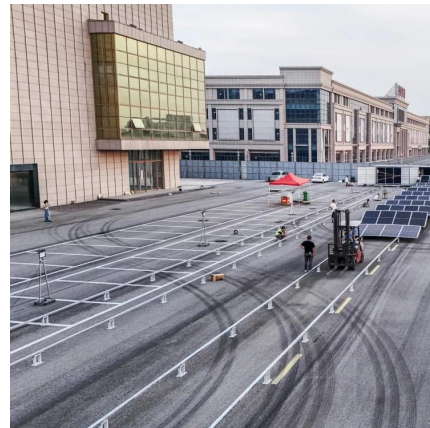
[WhatsApp](#)



250KW 300KW 500KW Solar System Cost

250kW, 300kW and 500kW solar energy storage systems are widely used in house communities, irrigation, villages, farms, hospitals, factories, airports, schools, hotels (holiday homes), farms,
...

[WhatsApp](#)



A planning scheme for energy storage power station based on ...

In this paper, the objective is to minimize the system cost and to obtain the corresponding objective function by setting the relevant parameters according to the different ...

[WhatsApp](#)

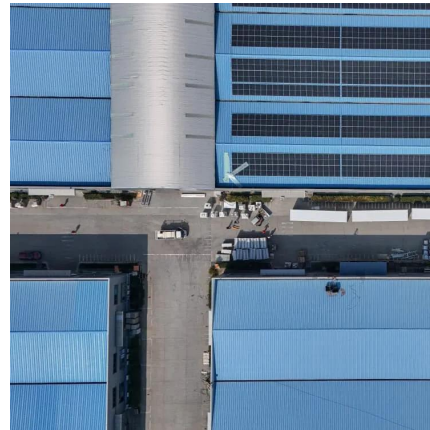




What are the Essential Site Requirements for Battery Energy Storage

In recent years, Battery Energy Storage Systems (BESS) have become an essential part of the energy landscape. With a growing emphasis on renewable energy ...

[WhatsApp](#)



Land use scale standard for photovoltaic energy storage ...

A photovoltaic power station, also known as a solar park, solar farm, or solar power plant, is a large-scale grid-connected photovoltaic power system (PV system) designed for the supply of ...

[WhatsApp](#)

Land-Use Requirements for Solar Power Plants in the United ...

This work was made possible by the Solar Energy Technologies Program at the U.S. Department of Energy (DOE). The authors wish to thank Billy Roberts, Jarett Zuboy, Trieu Mai, Nate Blair, ...

[WhatsApp](#)



[300kw energy storage power station occupies an area](#)

How much power does a new energy storage facility provide? The \$207.8 million facility boasts an energy storage capacity of 300 MW/1,800 MWh and occupies an area of approximately ...

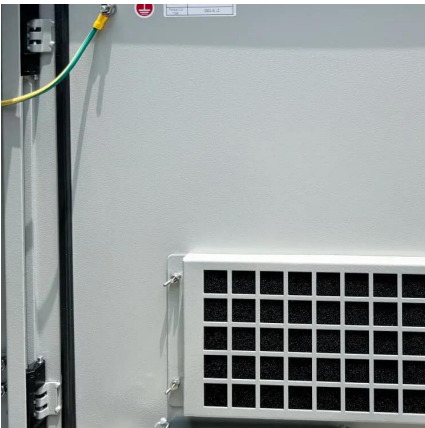
[WhatsApp](#)



Energy Storage Power Station Project Land Area: What You ...

San Diego's "Park & Power" initiative converts underused parking structures into layered storage sites. It's like turning a concrete donut into an energy powerhouse - with EV ...

[WhatsApp](#)



[China's Largest Grid-Forming Energy Storage Station ...](#)

This marks the completion and operation of the largest grid-forming energy storage station in China. The photo shows the energy storage station supporting the Ningdong ...

[WhatsApp](#)

[50 to 200kW Battery Energy Storage Systems](#)

Discover the MEGATRON Series - 50 to 200kW Battery Energy Storage Systems (BESS) tailored for commercial and industrial applications. These systems are install-ready and cost-effective, ...

[WhatsApp](#)





Contact Us

For catalog requests, pricing, or partnerships, please visit:
<https://www.straighta.co.za>