

## **300W photovoltaic panel standard size**





## Overview

---

A typical 300-watt solar panel is 65.8 inches long and 36.1 inches wide. It takes up 16.5 sq ft of area. If you have a 1000 sq ft roof, and you can use 75% of that roof area for solar panels, you can theoretically put 45 300-watt solar panels on a 1000 sq ft roof.



## 300W photovoltaic panel standard size

---



### [How long and wide is a 300W photovoltaic panel](#)

A 300w solar panel is about the same size as a residential solar panel, or at least the same as a standard solar panel. They typically measure about five feet long and three feet wide.

[WhatsApp](#)

### [How Big Is A Solar Panel? \(Dimensions - Weight + ±\)](#)

In general, the average or typical solar panel size for residential panels is approximately 65 inches by 39 inches. These panels are generally 5.4 feet by 3.25 feet in size. ...

[WhatsApp](#)



### **Solar Panel Sizes: Choosing the Right Dimensions for Any Project**

Choosing the right solar panel size can make or break your system's performance. In this guide, we break down how to match your energy needs, roof space, and budget with ...

[WhatsApp](#)



### [300W Solar Panel: Everything You Need to Know](#)

Size: Usually, the length of 300W solar panel is between 1.7 meters and 2 meters, and the width is about 1 meter, the exact size may be related to different brands, types of solar ...



[WhatsApp](#)



### **What is the length and width of a 300w solar panel? , NenPower**

Most solar panel manufacturers adhere to certain industry-standard dimensions for their products. For a 300-watt solar panel, the dimensions typically hover around 66 inches in ...

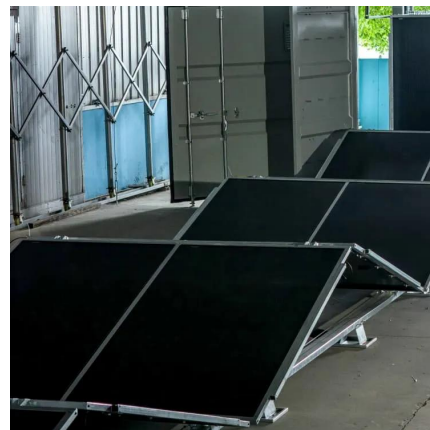
[WhatsApp](#)



### **300W Solar Panel Dimensions: What You Need to Know Before ...**

When planning your solar installation, understanding panel dimensions becomes as crucial as knowing your roof measurements. Most 300W solar panels dance around the 1650mm x ...

[WhatsApp](#)



### **Solar Panel Dimensions (Size): 300W,400W,1 Kw,How Big It Is?**

For example, a 300W solar panel typically measures about 1.6m x 1m, a 400W solar panel typically measures about 1.7m x 1.2m, and a 1Kw solar panel typically measures about 1.9m x ...

[WhatsApp](#)





### **300 W Solar Panels You'll Love for Their Incredible Efficiency**

Standard dimensions for 300 W solar panels are approximately 65 x 39 inches (165 x 100 cm), with slight variations depending on the manufacturer. They typically consist of ...

[WhatsApp](#)



## **Contact Us**

---

For catalog requests, pricing, or partnerships, please visit:  
<https://www.straighta.co.za>