

**2kw inverter must be selected**





## Overview

---

Can a 2KW inverter be used in parallel?

This inverter can be used in parallel with two different operation modes. 1. Parallel operation in single phase with up to 9 units. The supported maximum output power for 2KW is.

Why does a must power PV18 series inverter not supply power?

The Must Power PV18 Series inverter may charge the battery but not supply power without showing an error code due to being in "Charge state," where PV and grid power charge the batteries but do not power AC loads. This is a normal operation mode, not a fault. Page 1 2KW-3KW.

Why does a 3 kW inverter shut down?

Exceeding the power rating by having a larger load (too many appliances) than the inverter can handle will cause it to shut down. The power output of a 3 kW inverter for example is 3000 watts (3 kW). Peak output or surge power is the maximum power output an inverter can deliver for a short time.

What is the power output of an inverter?

Power output is the maximum continuous power the inverter can supply to all the loads on the system. Exceeding the power rating by having a larger load (too many appliances) than the inverter can handle will cause it to shut down. The power output of a 3 kW inverter for example is 3000 watts (3 kW).

Is it hard to maximize PV usage with a must inverter?

The next day, when solar power is available, it will continue powering the loads from the grid, until battery has reached setting #21. So in short, I find it hard to maximize PV usage with the MUST inverters. On 2024/05/16 at 5:20 AM, meetyg said: There are a few things to address here: 1.

What is the maximum output power for 2kW?



The supported maximum output power for 2KW is 18KW/18KVA, for 3KW is 27KW/27KVA and for 5KW is 45KW/45KVA. Maximum nine units work together to support three-phase equipment. Seven units support one phase maximum. For 2KW, the supported maximum output power is 18KW/18KVA and one phase can be up to 14KW/14KVA.



## 2kw inverter must be selected

---



[4200-010025-0300 ???,PV18-2.2-4KW VPM II,160V 60A ...](#)

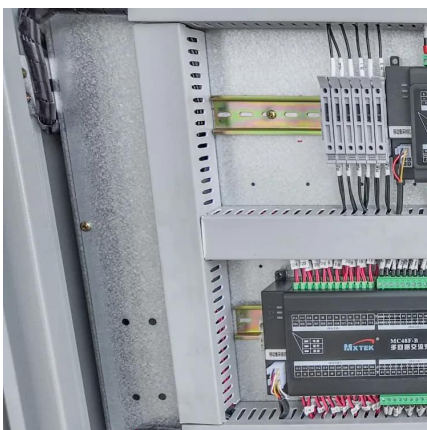
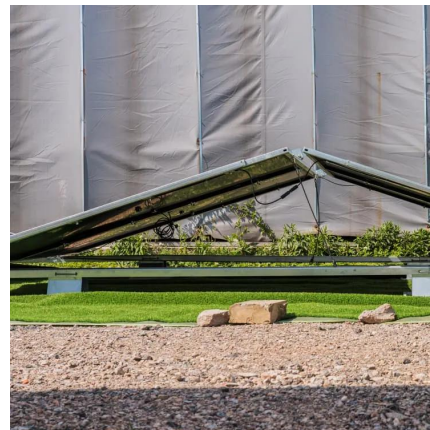
INTRODUCTION This is a multi-function inverter/charger, combining functions of inverter, solar charger and battery charger to offer uninterruptible power support with portable size. Its ...

[WhatsApp](#)

### **MUST 3KW-5.2KW Solar Inverter User Manual: AI Chat , Manualzz**

Below you will find brief information for 3KW-5.2KW. This multi-function inverter/charger combines the functions of an inverter, solar charger, and battery charger to offer uninterruptible power ...

[WhatsApp](#)



### **4.2KW/6.2KW SOLAR INVERTER / CHARGER**

This is a multi-function inverter, combining functions of inverter, solar charger and battery charger to offer uninterruptible power support in a single package. The comprehensive LCD display ...

[WhatsApp](#)

### **Must 2kW Trolley Inverter with 2560wh Lithium Battery - (IN ...**

Must 2kW Trolley Inverter with 2560wh Lithium Battery MUST HBP1800 series all-in-one energy storage solution, support 2KW output for



different load appliances. It's based on the original ...

[WhatsApp](#)



[MUST POWER PV18 SERIES USER MANUAL Pdf Download](#)

The Must Power PV18 Series inverter may charge the battery but not supply power without showing an error code due to being in "Charge state," where PV and grid power charge the ...

[WhatsApp](#)

## Contact Us

---

For catalog requests, pricing, or partnerships, please visit:  
<https://www.straighta.co.za>