

280W solar panel charging 24A battery



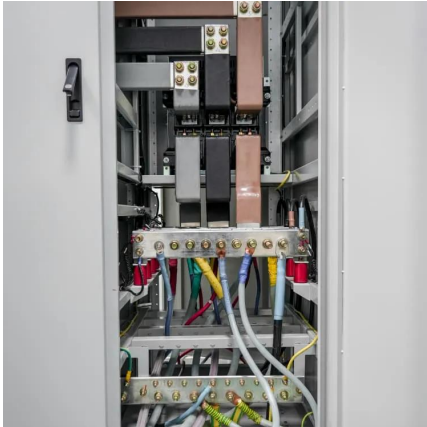


Overview

Note: Click [here](#) to read our in-depth post on how to use this calculator and what factors it takes into account and some shortcomings of this calculator. Battery depth of discharge is the percentage of the battery.



280W solar panel charging 24A battery



Calculate Battery Size For Any Size Inverter (Using Our Calculator)

Related Post: Solar Panel Calculator For Battery
How To Calculate Battery Capacity For Inverter
To calculate the battery capacity for your inverter use this formula ...

[WhatsApp](#)

What Size Solar Panel To Charge 24v Battery? (incl. Calculator)

Use our free online solar panel size calculator to find out what size solar panel to charge a 24v battery in desired peak sun hours. Note: Click here to read our in-depth post on ...

[WhatsApp](#)



Can A Solar Panel Charge A Battery Directly? Benefits, Risks, ...

Yes, a solar panel can charge a battery directly. However, without proper control, voltage variations may damage the battery. To prevent this, use a charge controller. This ...

[WhatsApp](#)

A Complete Guide on How to Charge a Battery from Solar Panels

In this blog post, we'll provide you with an in-depth guide on how to charge a battery from solar panels. Also, we'll discuss the components



of a solar charging system and ...

[WhatsApp](#)



[ABYSS® 280W Monocrystalline Foldable Solar Panel](#)

Introducing our latest innovation in sustainable energy - the ABYSS® 280W Foldable Solar Panel. Designed for the ABYSS® 1600W Portable Power Station, this solar panel is the ...

[WhatsApp](#)



How can i Use a 31 Volt, 280W solar panel to run 12 volt DC?

I have two of these panels and I want to run some small 12 volt DC fans and other things. Can someone specifically tell me what I need to buy to do that. Thanks in advance if you know! ...

[WhatsApp](#)



How many watts of solar panels are needed for a 24A battery

Solar panels vary widely in their efficiency ratings, which ultimately affects how many watts are needed for a given setup. Most contemporary panels range from 15% to 22% ...

[WhatsApp](#)





[Solar Panel Charging: Max Your Battery Life!](#)

Solar panels are a great way to charge batteries without relying on the power grid - perfect for camping trips, power outages, or simply cutting down on electricity bills. Batteries are the heart ...

[WhatsApp](#)



Solar Panel Charging Calculations of a Battery (Calculated)

Using a 100-watt solar panel to charge a 5-volt lithium-ion battery with a 12 Ah capacity will take 3.1 hours of direct sunshine to charge fully. Depending on the charging ...

[WhatsApp](#)

[SOLAR PANEL SIZE CALCULATOR CHECK BATTERY CHARGE](#)

Learn how to choose the right size of solar panels for your home or vehicle based on factors such as space, power, and budget. Compare the average dimensions, wattage, and weight of ...

[WhatsApp](#)



How to Calculate Solar Panel for Battery Charging: A Step-by ...

By following these steps, you can effectively calculate the solar panel size necessary for charging your designated battery, helping you power your devices sustainably.

[WhatsApp](#)



Contact Us

For catalog requests, pricing, or partnerships, please visit:
<https://www.straighta.co.za>