

250v lithium battery pack





Overview

What is a 12V 250ah battery?

This 12v 250ah battery is a LiFePO4 lithium chemistry. Which offer BMS controlled safety, long life, fast-charging performance, also the BMS embeds smart balancing algorithms that control all cell voltages in the battery, making sure they are constantly at the same voltage level, optimizing battery capacity. The Certification that ELB Got:.

How long does a 12V 250ah battery last?

1200+ LIFECYCLES 12V 250Ah Battery - NPP Deep Cycle rechargeable Battery ensure a lifespan of more than 1200 cycles. Spill proof because of the AGM & VRLA (valve regulated) technology that eliminates spills and overpressure.

What is a Chargex cx24250 battery?

The CHARGEX® CX24250 comes with the industries leading - Lifetime Warranty. This 24V 250AH Lithium Ion Battery is the perfect replacement from an AGM, GEL or Lead Acid Battery. Designed as a "drop in replacement" meaning all you have to do is take out your old battery and place the Lithium Battery in the same way.

What is the best solar battery for an RV?

Go further off-the-grid with the new Go Power! 250Ah Lithium Iron Phosphate Solar Battery (GP-LIFEPO4-250). Built specifically for mobile applications, the Go Power! 250Ah LiFePO4 Lithium Iron Phosphate Solar Battery (GP-LIFEPO4-250) deep cycle battery is ideal for use in an RV.

What is the capacity of NPP 250ah battery?

DIMENSION & MORE CAPACITY - 20.51 x 10.59 x 8.66 inch, Total Height: 8.82-inch, Weight: 164.2 lbs. Compared with other battery, NPP 250Ah Gel Series battery with smooth discharging voltage and mild discharge platform. The NPP Battery can be stored almost two years with electrification, which is



four times more than traditional AGM battery.

What are the safety components in a lithium battery?

LiFePO4 Lithium batteries feature several safety components in the BMS, which include: Over and under voltage protection, which disconnects the battery from the load or charger, to prevent damage if it occurs Over and under temperature protection, which also disconnects from the load if the temperature limits are exceeded



250v lithium battery pack



BLACK+DECKER 20V MAX POWERCONNECT 1.5 Ah Lithium Ion Battery, 2 Pack

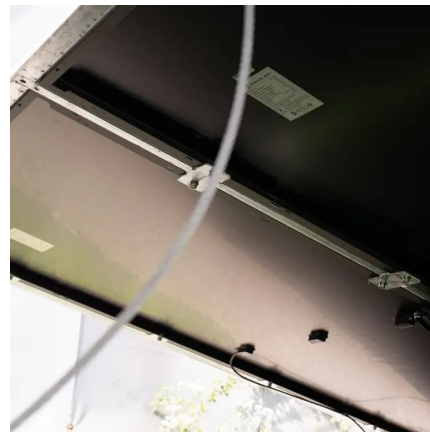
Power up all of your tools with this BLACK+DECKER 20V MAX* 1.5Ah POWERCONNECT battery 2 PK. Compatible with BLACK+DECKER 20V MAX* POWERCONNECT cordless tools and outdoor equipment, these lightweight batteries are easy to install and ...

[WhatsApp](#)

NPP NPD12-250Ah (2 Pcs) 12V 250Ah AGM Deep Cycle Sealed ...

The NPD12-250Ah Sealed Lead Acid AGM Deep Cycle Battery is made with heavy duty lead calcium grids with 10+ years of floating design life. The NPD series is ideal for ...

[WhatsApp](#)



[250v lithium ion battery for Electronic Appliances](#)

There are several types of 250V lithium ion batteries, each suited for different applications. From powering electric tricycles to serving as the backbone for portable power ...

[WhatsApp](#)



[Go Power GP-LIFEPO4-250 12V 250A Hour Lithium Battery](#)

Go further off-the-grid with the new Go Power! 250Ah Lithium Iron Phosphate Solar Battery. Built specifically for mobile applications, this deep



cycle battery is ideal for use in ...

[WhatsApp](#)



24V 250AH Lithium Ion Battery

This 24V 250AH Lithium Ion Battery is the perfect replacement from an AGM, GEL or Lead Acid Battery. Designed as a "drop in replacement" meaning all you have to do is take out your old ...

[WhatsApp](#)



Go Power! 12V 250Ah LifePO4 Lithium Battery (GP-LiFePO4-250)

Cylindrical cells - Go Power batteries use cylindrical lithium-ion battery cells. Cylindrical lithium cells typically have much more power, better performance and greater longevity than prismatic ...

[WhatsApp](#)



[250Ah Lithium Iron Phosphate Solar Battery . Go Power!](#)

Go further off-the-grid with the new Go Power! 250Ah Lithium Iron Phosphate Solar Battery. Built specifically for mobile applications, this deep cycle battery is ideal for use in an RV. Efficient, ...

[WhatsApp](#)





Super Performance 250v Lithium Battery At Enticing Deals

A 250V lithium battery is a high-voltage system suitable for demanding applications. It is especially popular in renewable energy setups, electric vehicles, and large energy storage ...

[WhatsApp](#)



DEWALT 20V Max 4.0 Ah Premium XR Lithium-Ion Battery at Tractor Supply ...

The DEWALT 20V MAX Premium XR Lithium Ion Battery Pack provides up to 33% longer run-time than standard 20V MAX battery packs. This Premium XR Lithium Ion Battery Pack ...

[WhatsApp](#)

[Lithium Ion battery 12V 250Ah - LiFePO4 - PowerBrick®](#)

The 12V-250Ah LFP battery pack is ideal for wind and solar energy storage, AGV (automated guided vehicle), marine, boats, traction, small EV, forklifts, robotics, and much more

[WhatsApp](#)



[12V 250Ah Lithium Iron Phosphate Battery \(LiFePO\)](#)

The LV4850-2U-PRO is a high-capacity lithium battery module designed for rack-mounted battery systems. It offers reliable energy storage solutions for various applications, ...

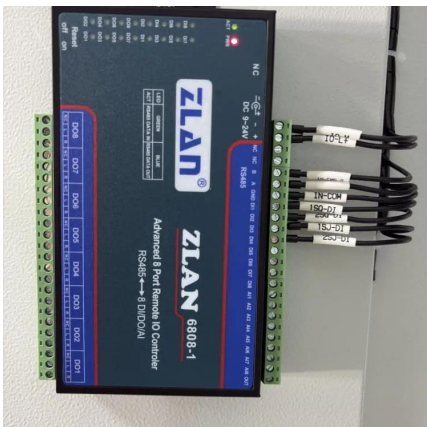
[WhatsApp](#)



MAXLANDER 20V 2.0Ah Lithium Battery Pack, Rechargeable Battery

About this item 20V 2.0Ah good quality and durable lithium battery pack included.Rechargeable and long life time. MaxLander battery can fit for all MaxLander 20V garden tools The battery ...

[WhatsApp](#)



[250v lithium ion battery for Electronic Appliances](#)

There are several types of 250V lithium ion batteries, each suited for different applications. From powering electric tricycles to serving as the backbone for portable power banks, these ...

[WhatsApp](#)

Contact Us

For catalog requests, pricing, or partnerships, please visit:
<https://www.straighta.co.za>