

228kw photovoltaic inverter





Overview

What is TBEA string inverter ts228kti-hv?

TBEA's string inverter TS228KTL-HV adopts intelligent heat exchange heat dissipation design to ensure stable power output of 250kW, 228kW and 208kW at the ambient temperature of 30°C, 40°C and 50C respectively, and has excellent derating output capability, which can adapt to different high temperature scenarios.

Are goodwe solar inverters a good investment?

Being light-weight, highly-efficient and low-cost, GoodWe residential grid-tied solar inverters are designed to be simple to install, operate, and maintain, so as to ensure a quick return on investment (ROI). GoodWe's C&I grid-tied inverters are designed to deliver high efficiency and reliability.

What is a photovoltaic inverter (PVI) station?

It is based on the same best-in-class power conversion platform as our AMPS solutions, enabling greater scalability and flexibility. Hitachi Energy's Photovoltaic Inverter (PVI) station provides you with advanced control and power capabilities that are designed to meet complex technical requirements and the most challenging grid codes.

What is ts228kti-hv string inverter?

TS228KTL-HV string inverter of Sunoasis company adopts intelligent air-cooling method to make the temperature rise of IGBT module lower, the life of IGBT module longer, and enhance the reliability of IGBT.

Which SolarEdge Solar inverter models are available?

The following SolarEdge solar inverter models are available: 4kW*, 5kW, 6kW, 7kW, 8kW, 9kW, 10kW, 12.5kW, 15kW, 16kW, 17kW, 25kW, 27.6kW, 33.3kW*
No results found. Try another keyword, or select the language/document type you are looking for. The SolarEdge DC-AC PV inverter is specifically designed



to work with the SolarEdge power optimizers.

What inverters are coming out in 2023?

The latest inverters added to the list in 2023 are the next-generation inverters from Sungrow, Fronius, Goodwe, Growatt, Solax and Sofar, plus the new DS3D and QT2 microinverters from APsystems, along with microinverters from ZJ-Beny and Envertech.



228kw photovoltaic inverter



[228kW Solar Plant Price list and Major Components](#)

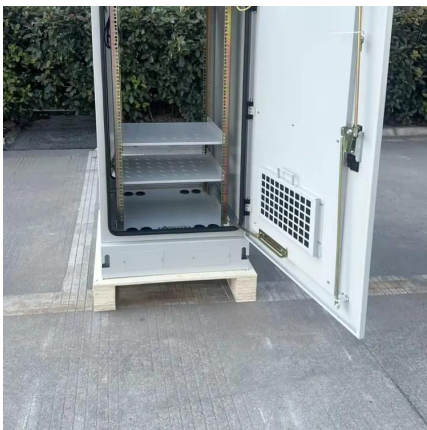
For 228kW Solar Plant, single phase inverters by Solis or Sofar / Growatt are excellent pick. For a more premium segment, SMA / Sungrow offers good reliability along with customer service.

[WhatsApp](#)

TBEA New Energy Spearheads the Charge Into the Era of Grid

The TS228KTL-HV inverter, with a power rating of 228kW, has outstanding technical features such as high capacity ratio, friendly grid connection, safety and reliability, ...

[WhatsApp](#)



[Home > PV Powered 100kW Inverter, 208 & 480 Volt](#)

PV Powered 100kW Inverter 208 & 480 Volt
Detailed Description: The PV Powered 100kW inverter sets the industry standard for high reliability, ease of installation and lifetime maintainability. ...

[WhatsApp](#)

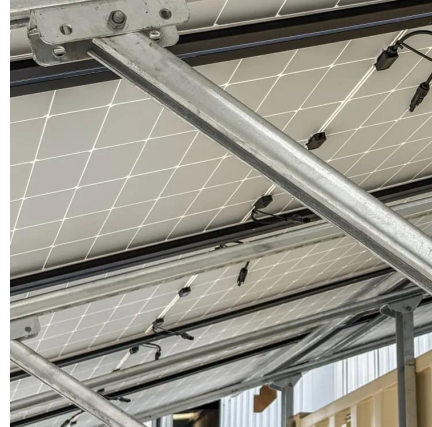
Tbea TS250KTL-HV , PDF , Photovoltaic System , Photovoltaics

The document is a user manual for the TS208/228/250KTL-HV series string photovoltaic grid-connected inverters by TBEA Xi'an Electric



Technology Co., Ltd. It provides detailed ...

[WhatsApp](#)



Contact Us

For catalog requests, pricing, or partnerships, please visit:
<https://www.straighta.co.za>