

## **2 series 4 parallel 12v lithium iron phosphate battery pack**





## Overview

---

What is the difference between series and parallel connection of LiFePO4 batteries?

Similarities: Enhanced Battery Performance: Both series and parallel connections of LiFePO4 batteries can enhance the overall performance of the battery pack. A series connection increases the voltage output, while a parallel connection boosts the capacity.

What is the difference between LiFePO4 and 12V batteries?

For instance, if four 12V batteries are connected in series, the output voltage of the battery pack will be 48V. In contrast, parallel connection of LiFePO4 batteries increases the overall capacity of the battery pack, but the voltage output remains the same as that of an individual cell or battery.

How are LiFePO4 batteries connected?

Like other types of battery cells, LiFePO4 (Lithium Iron Phosphate) cells are often connected in parallel and series configurations to meet specific voltage and capacity requirements for various applications. The following is some information about series and parallel connections before we get into the details further.

Do parallel connections increase the capacity of LiFePO4 batteries?

Capacity: Parallel connections of LiFePO4 batteries enhance the total capacity of the battery pack. For instance, connecting four 100Ah batteries in parallel results in a total capacity of 400Ah. Conversely, series connections do not increase the overall capacity; they only increase the voltage output.

Can you connect 12V lithium batteries in parallel?

Yes, you can connect 12V lithium batteries in parallel. When connected in parallel, the voltage remains the same (12V in this case), but the capacity (Ah) adds up. It's essential to make sure the batteries you're connecting have the



same voltage level and ideally the same state of charge to prevent unwanted current flows between the batteries.

Can a 12V lithium battery be connected in series?

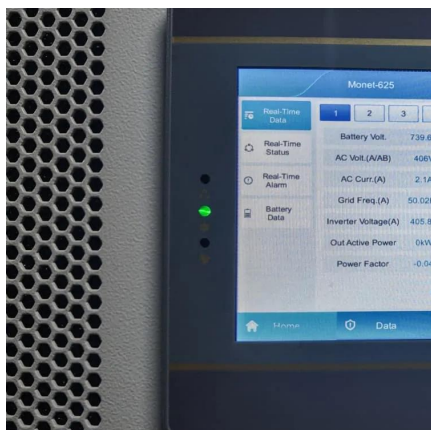
Yes, you can connect 12V lithium batteries in series. When you do, the voltages of each battery will add up. For instance, if you connect two 12V lithium batteries in series, you will get a total voltage of 24V. Can i connect 12v lithium in parallel?

Yes, you can connect 12V lithium batteries in parallel.



## 2 series 4 parallel 12v lithium iron phosphate battery pack

---



### [How to Balance and Series Connect 12V LiFePO4 Batteries](#)

Individually charging with the same charger will ensure a perfect charge. This way beginners can never screw it up. There are so many variables to putting in parallel and wiring ...

[WhatsApp](#)

### Can You Connect LiFePO4 Batteries in Series? An Expert Guide

In the diverse world of battery technology, LiFePO4 (Lithium Iron Phosphate) batteries stand out for their stability, safety, and durability. Given these attributes, many tech ...

[WhatsApp](#)



### 5 Best 12 Volt Lithium RV Batteries Reviewed + How To Charge

Many 12 volt lithium-ion batteries can be wired in parallel to increase amp hours if you need more stored power. This article will review the best 12-volt lithium batteries for RVs ...

[WhatsApp](#)



### Renogy 12V 300Ah Core Series Deep Cycle Lithium Iron Phosphate Battery

Shop Renogy 12V 300Ah Core Series Deep Cycle Lithium Iron Phosphate Battery w/Self Heating products at Best Buy. Find low everyday prices



and buy online for delivery or in-store pick-up. ...

[WhatsApp](#)



### How to Calculate the Capacity and Voltage of LiFePO4 Battery ...

When designing a battery system using LiFePO4 (Lithium Iron Phosphate) battery, one of the most critical steps is determining the right voltage and capacity to meet your specific ...

[WhatsApp](#)



### 12V 100Ah Smart Lithium Iron Phosphate Battery , Renogy Australia

With 4000 life cycles and outstanding BMS, the 12V 100ah Lithium Iron Phosphate battery offers perfect performance for car, camping, caravan, marine, 4WDs and RV's.

[WhatsApp](#)



### How many strings are 48V20AH lithium battery packs? How to ...

Therefore, the lithium battery must also be about 58v, so it must be 14 strings to 58.8v, 14 times 4.2, and the iron-lithium full charge is about 3.4v, it must be four strings of 12v, ...

[WhatsApp](#)

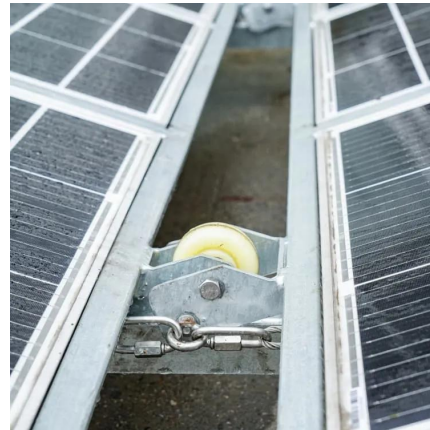




### [12V 100Ah LiFePO4 Lithium Iron Phosphate Battery](#)

Backed by an industry-leading 10-year warranty and lifetime, the HQST 12 volt 100Ah LiFePO4 battery is the ideal replacement for traditional lead-acid batteries, offering exceptional durability.

[WhatsApp](#)



### **HQST 12 Volt 100Ah Lithium Iron Phosphate Battery with LED ...**

?Series & Parallel Connections for Expandable Power?The HQST 12V 100Ah lithium battery supports both series and parallel configurations. Easily build a 24V, 36V, or 48V ...

[WhatsApp](#)

### [12V Lithium Iron Phosphate \(LiFePO4\) Batteries](#)

LEOCH® 12V LFELI Series, Lithium Iron Phosphate (LiFePO4) batteries, are a "drop-in" replacement for traditional lead acid batteries offering 20x longer cycle life at 40% of the weight.

[WhatsApp](#)



### **LiFePO4 Lithium Batteries in Series VS Parallel Connection**

Connecting lithium-ion batteries in parallel or series is more complex than merely linking circuits in series or parallel. Ensuring the safety of both the batteries and the person ...

[WhatsApp](#)



### **HQST 12 Volt 100Ah LiFePO4 Lithium Iron Phosphate Battery, ...**

Buy HQST 12 Volt 100Ah LiFePO4 Lithium Iron Phosphate Battery, Built-in Optimized BMS with Low & High Temp Protection, Series and Parallel Connection, for RVs, ...

[WhatsApp](#)



### [Charging LiFePO4 Batteries In Parallel And Series Guide](#)

By following these guidelines, you can effectively charge lithium iron phosphate batteries in parallel. For best results, use our top-quality lithium iron phosphate batteries and ...

[WhatsApp](#)



### **12V 300Ah Deep Cycle Lithium Iron Phosphate Battery , Renogy UK**

Renogy 12V 300Ah Core Series Battery, your trusted, one-stop solution for upgrading from Lead to Lithium. Compatible with Renogy's solar panels, solar charge controllers, and inverters, this ...

[WhatsApp](#)





## Contact Us

---

For catalog requests, pricing, or partnerships, please visit:  
<https://www.straighta.co.za>