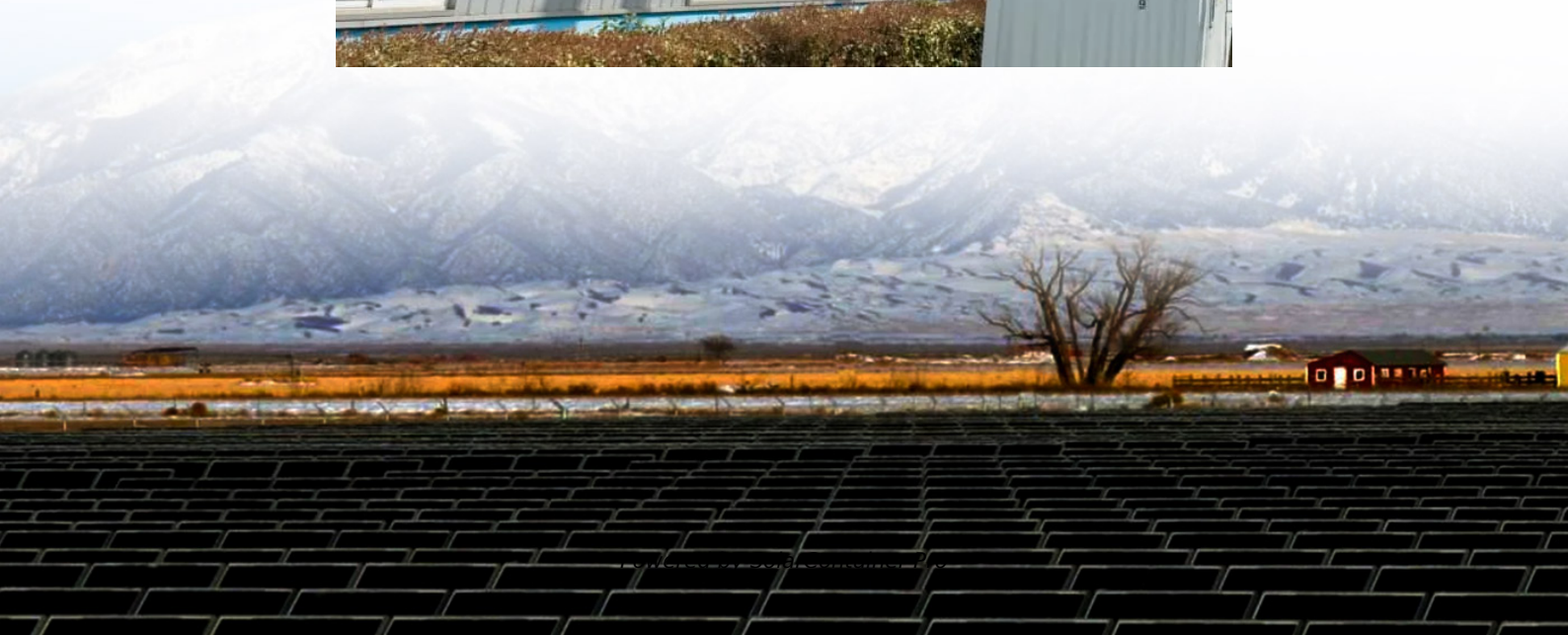


18v solar panel with 12v water pump inverter





Overview

How to choose a solar pump inverter?

Understand the rated power of the water pump. Normally, the rated power of the solar pump inverter should be slightly more than or equal to the rated power of the water pump to ensure that the pump can be operated normally. For instance, if the water pump's rated power is 2kW, the selected inverter should have a rated power of 2kW or higher.

How do I connect a solar panel to a water pump?

To avoid this situation, you can simply connect DC buck converter between your solar panel and water pump which will help to supply only upto 12v power to your water pump. I'm doing a similar set up with a 50w 12v panel and 5w 12v pump.

Can a 12V pump run on a solar panel?

Buy a small, low power 12V pump. Connect it straight to the panel. It'll run most of the time when the sun is shining. It probably will work just fine like JRE says. But there could be a slight chance that the panel will over-volt the motor if the motor does not need the whole 10 Watts. @jigneshsorathiya that one won't work, it's for AC power.

Can a solar inverter drive a water pump?

Let's explore them. Three solar inverters can drive a water pump and convert photovoltaic direct current into alternating current. It is an inverter designed for running water pumps using solar power. It directly transforms the direct power produced by solar panels into an alternating current to drive the pump.

Do I need a DC water pump if I have a solar panel?

A 12v 10w solar panel will create DC power. You need a DC water pump if you want to run it directly from your solar panel. Also, there is chance your solar panel might create more than 12v power, in which your water pump will get



damage in long run.

What is a solar pump inverter?

The solar pump inverter is an off-grid inverter that doesn't rely on the grid and operates independently of the load. The traditional off-grid inverter requires a battery, which costs about 30% of the system's cost. The system has a life span of only 3-5 years, which can affect your ROI.



18v solar panel with 12v water pump inverter



TASHHAR 300W Solar Panel Kit with Power Converter, Controller, 18V

TASHHAR high efficiency solar panels - can be used as a replacement charger for cars, trucks, caravans, boats, motorcycles, RV batteries or any 12V lead acid battery.

[WhatsApp](#)

Solar Panel Kits, Solar Module & Wind Power System , Eco-Worthy

Solar module factory outlet, including off-grid solar panel kits, solar pumps, linear actuator, wind turbines, inverters & charge controllers for your home, commercial, or industrial application.

[WhatsApp](#)



[How an 18V Solar Panel Can Charge a 12V Battery?](#)

Conclusion In summary, an 18V solar panel can effectively charge a 12V battery, provided that a charge controller is used to regulate the charging process. The key is to use ...

[WhatsApp](#)



[What Kind Of Solar Inverters Can Drive a Water Pump?](#)

In this article, we'll introduce the three types of solar inverters by highlighting their unique features, advantages, and factors to consider



before picking the best. The solar pump ...

[WhatsApp](#)



[Solar water pump external DC controller user manual](#)

3. Installation and Wiring 3.1 Solar Panel Selection Before installing the solar water pump and DC controller, we should know how to select the solar panel for the solar water pumping system. ...

[WhatsApp](#)



Will a DC water pump work if directly connected to solar panels without

For example, for an 80 watts water pump, you should choose a 100 watts ~120 watts solar panel for it (because the solar panels have about 30% energy loss), and the output ...

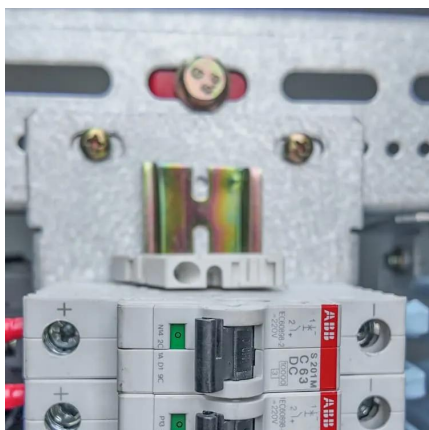
[WhatsApp](#)



Best Solar Water Pump Inverters for Efficient Off-Grid Power ...

Harnessing solar energy to power water pumps requires reliable and efficient inverters that convert solar DC power into usable AC power. Below is a curated selection of ...

[WhatsApp](#)





How To Connect A Solar Panel To A Water Pump (Step By Step)

Can I connect a solar panel directly to a water pump? You could connect a solar panel directly to a water pump. It is not a good idea, though. The erratic pulse of electricity ...

[WhatsApp](#)



Can I have my DC water pump run off solar panel during day?

Can I have my DC water pump run off solar panel during day? I have a 100 watt solar panel powering the DC pump (rated for 12v,18v and 24v) in my pond. Its connected ...

[WhatsApp](#)



Small pond pump battery backup . DIY Solar Power Forum

I am looking to add a bigger panel and a battery backup for my small pond pump. It came with a 25w panel that directly connects to the pump, but it only runs when its perfectly ...

[WhatsApp](#)



What Kind of Solar Inverter Can Drive a Water Pump?

Learn which solar inverter works best for driving a water pump in different setups. Choosing the right solar inverter is crucial to ensure your water pump operates efficiently.

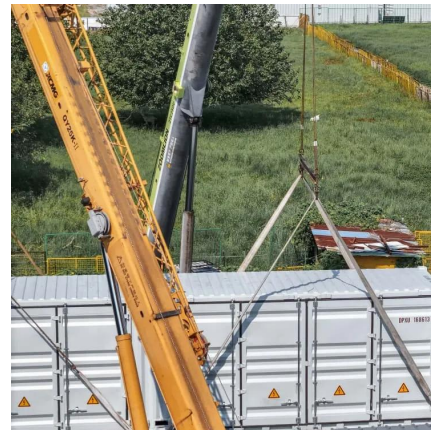
[WhatsApp](#)



[How to Connect Solar Panel to Water Pump](#)

In this guide, we will explain how to connect a solar panel to a water pump so that you can easily draw power using sunlight. Water pumps play a vital role in our lives, helping us ...

[WhatsApp](#)



Contact Us

For catalog requests, pricing, or partnerships, please visit:
<https://www.straighta.co.za>