

18v 50w solar water pump inverter





Overview

What is a solar pump inverter?

Solar Pump Inverter A solar pump inverter is a specialized type of inverter designed explicitly for operating water pumps using solar power. It directly converts the DC power generated by solar panels into AC power to drive the pump. **Advantages:** **Direct Drive:** The direct conversion process is efficient and reduces energy loss.

How to choose a solar pump inverter?

Understand the rated power of the water pump. Normally, the rated power of the solar pump inverter should be slightly more than or equal to the rated power of the water pump to ensure that the pump can be operated normally. For instance, if the water pump's rated power is 2kW, the selected inverter should have a rated power of 2kW or higher.

What is a solar power inverter?

3 2. Solar On-Grid Inverter 4 3. Solar Power Off Grid Inverter In the realm of solar energy solutions, a common application is the utilization of solar inverters to drive water pumps. Especially in areas where conventional grid electricity is scarce or unreliable, solar-powered water pumps offer a sustainable and efficient alternative.

Can a solar inverter drive a water pump?

Let's explore them. Three solar inverters can drive a water pump and convert photovoltaic direct current into alternating current. It is an inverter designed for running water pumps using solar power. It directly transforms the direct power produced by solar panels into an alternating current to drive the pump.

Which solar water pump inverter is available online?

The 5.5kW three-phase AC 220V solar pump inverter is now available online. This solar pumping inverter integrates advanced MPPT tracking for precise



voltage detection and optimal performance. The solar water pumping system supports AC and DC input, with a DC voltage range of 300V~380V and a power factor >0.99 .

What is a 15 hp water pump solar inverter?

15hp water pump solar inverter with MPPT control, AC 25A output at 3-phase, rated power 11kW, and DC voltage range (280V, 750V). 15 hp solar pump inverter with RS485 communication and IP20 protection, supports AC and DC input, works at $(-10^{\circ}\text{C}, 40^{\circ}\text{C})$.



18v 50w solar water pump inverter



Best Solar Water Pump Inverters for Efficient Off-Grid Power ...

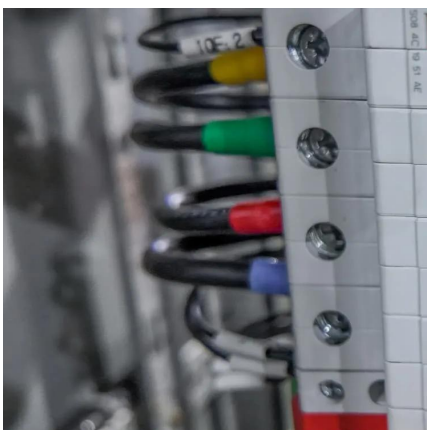
Harnessing solar energy to power water pumps requires reliable and efficient inverters that convert solar DC power into usable AC power. Below is a curated selection of ...

[WhatsApp](#)

[What Kind of Solar Inverter Can Drive a Water Pump?](#)

This article explores three types of solar inverters that are capable of driving AC water pumps, each with its unique features, benefits, and limitations. 1. Solar Pump Inverter A ...

[WhatsApp](#)



What Is a Solar Pump Inverter and Why Do You Need One for Your Solar

A solar pump inverter is a device that converts the direct current (DC) from solar panels into alternating current (AC) to power water pumps. It's made specifically for solar water-pumping ...

[WhatsApp](#)

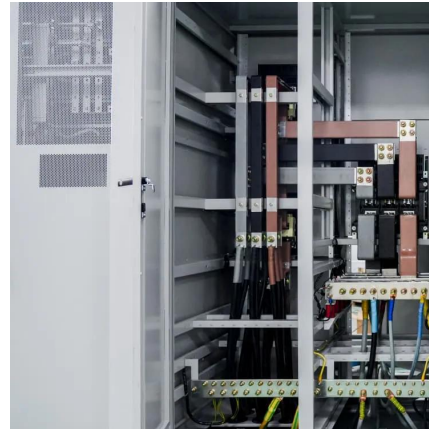
Solar Pump Inverters: The Ultimate Guide to Efficiency, Cost ...

Discover how solar pump inverters revolutionize water pumping systems. Learn about benefits, key features, and how to choose the best solar



inverter for your agricultural or ...

[WhatsApp](#)



[What Kind Of Solar Inverters Can Drive a Water Pump?](#)

In this article, we'll introduce the three types of solar inverters by highlighting their unique features, advantages, and factors to consider before picking the best. The solar pump ...

[WhatsApp](#)

[How to Choose the Best Solar Pump Inverter \(2025 Guide\)](#)

Choosing the right solar pump inverter saves energy, boosts water output, and ensures long-term reliability. Use this guide, compare top brands like Hober and Solartech, ...

[WhatsApp](#)



Contact Us

For catalog requests, pricing, or partnerships, please visit:
<https://www.straighta.co.za>