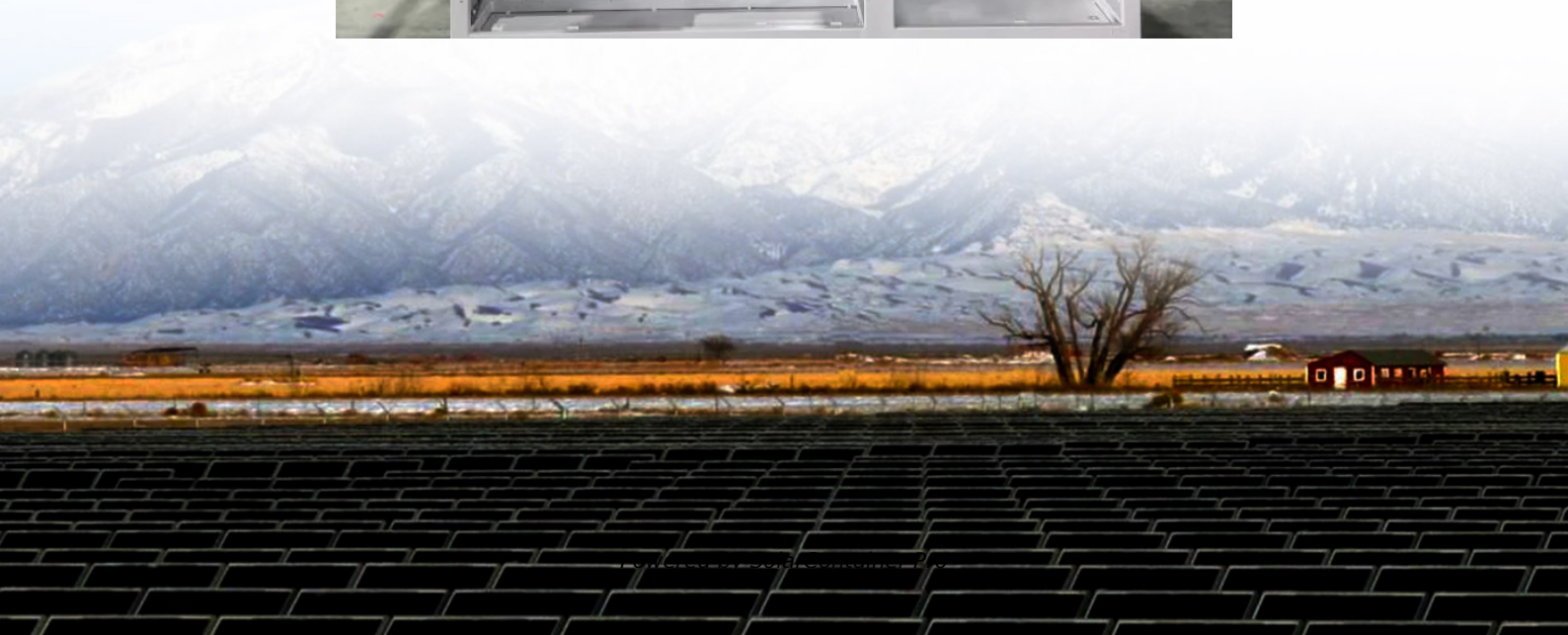


# 12v inverter capacity





## Overview

---

Before we go any further, we highly recommend that you choose a pure sine wave inverter. This type of inverter delivers high-quality electricity, similar to your utility company. This way, none of your appliances run the risk of being damaged. Now, when it comes to sizing your inverter, you always need to check.

We have summarized the appliances that inverters from 300W to 3000W can run depending on their rated maximum power. Note to our readers: Use the above formula to determine.

Now, here is how you calculate the inverter battery capacity,  $= (585 \text{ watts} \times 2 \text{ backup hours}) / (12 \text{ volts}) = 97.5 \text{ Ah}$  This is the ideal inverter battery capacity for your home. This is all you need to find the right inverter size for your home use. What is the recommended battery size for an inverter?

Interpreting Results: Once you input the required data, the calculator will generate the recommended battery size in ampere-hours (Ah). For instance, if your power consumption is 500 watts, the usage time is 4 hours, and the inverter efficiency is 90%, the calculator might suggest a battery size of approximately 222 Ah.

What voltage should a 12V inverter run on?

The input voltage of the inverter should match the battery voltage. (For example 12v battery for 12v inverter, 24v battery for 24v inverter and 48v battery for 48v inverter) Summary What Will An Inverter Run & For How Long?

.

What is the calculate battery size for inverter calculator?

The Calculate Battery Size for Inverter Calculator helps you determine the optimal battery capacity needed to support your inverter system. By inputting critical parameters such as power consumption, inverter efficiency, and desired usage time, this calculator provides a precise battery size recommendation tailored to your specific needs.



What are the different solar inverter sizes?

Solar generators range in size from small generators for short camping trips to large off-grid power systems for a boat or house. Consequently, inverter sizes vary greatly. During our research, we discovered that most inverters range in size from 300 watts up to over 3000 watts. In this article, we guide you through the different inverter sizes.

How much power does an inverter use?

Consider the case of Alex, who is setting up a home office reliant on an inverter system. Alex needs to ensure uninterrupted power for his computer (200W) and lighting (50W) for 5 hours. Using the calculator, Alex inputs a total power consumption of 250W, a usage time of 5 hours, and an inverter efficiency of 90%.

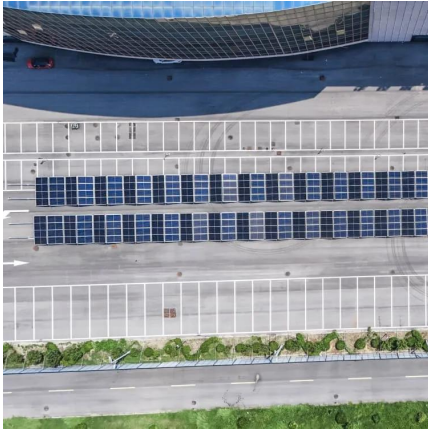
What size inverter for a 200Ah battery?

To determine the appropriate inverter size for a 200Ah battery, consider the following: A 500VA inverter would be suitable, offering a balance between performance and battery life. For extended run times, consider larger inverters or additional batteries to meet higher power demands.



## 12v inverter capacity

---



[What Size Inverter Will Run a Home? , Fenice Energy](#)

Inverter size, commonly referred to as an inverter capacity, ensures the amount of power to be delivered at any given time, making it an essential factor in choosing the suitable ...

[WhatsApp](#)

### Renogy Inverter P2 3000W Pure Sine Wave Inverter 12V DC to ...

About this item ?POWERFUL DC-AC?This 3000 watt inverter 12V to 110V provides 3000W continuous DC to AC power, 6000W peak surge during load start-up, 12V to 120V AC pure sine wave with conversion efficiency >90%, reduces conversion loss.

[WhatsApp](#)



### Inverter Size Calculator

Choosing the wrong inverter size can lead to overloads, inefficiency, or even system failure. That's where our Inverter Size Calculator comes in -- a simple, efficient, and highly accurate tool that ...

[WhatsApp](#)

### What Size Inverter Do You Need? A Complete Guide for Home, ...

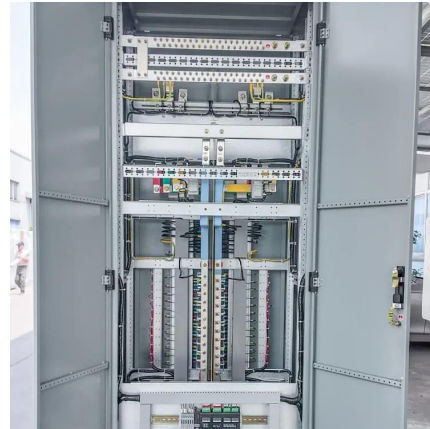
Choosing the right inverter size is crucial--too small, and your appliances won't work; too large, and you'll waste money. This guide will help you





determine the ideal inverter ...

[WhatsApp](#)



### [Frequently Asked Questions about Inverters](#)

Frequently Asked Questions about Inverters How much battery capacity do I need with an inverter? As a rule of thumb, the minimum required battery capacity for a 12-volt system is ...

[WhatsApp](#)



### **What does a power inverter do, and what can I use one for?**

The inverter draws its power from a 12 Volt battery (preferably deep-cycle), or several batteries wired in parallel. The battery will need to be recharged as the power is drawn out of it by the ...

[WhatsApp](#)



### **Calculate Battery Size For Any Size Inverter (Using Our Calculator)**

Inverter capacity (W)\*Runtime (hrs)/solar system voltage = Battery Size\*1.15. Multiply the result by 2 for lead-acid type battery, for lithium battery type it would stay the ...

[WhatsApp](#)

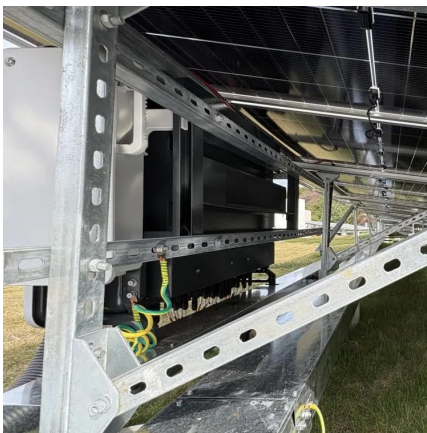




### [Amazon : 12 Volt Power Inverter: Electronics](#)

1000 Watt Power Inverters 12v to 110v for Vehicles - with Dual AC Outlets, 1000w Inverter with 3.0A USB and Type-C, 12v Inverter car Cigarette Lighter Battery for/Truck/RV/Emergency ...

[WhatsApp](#)



### **Understanding Battery Capacity and Inverter Compatibility**

For a 200 Ah battery, the calculation depends on the battery's voltage. Assuming a 12V battery:  
 $Wh = 200 \text{ Ah} \times 12 \text{ V} = 2400 \text{ Wh}$ . Thus, a 200 Ah battery at 12 volts has a capacity of ...

[WhatsApp](#)

## **Contact Us**

---

For catalog requests, pricing, or partnerships, please visit:  
<https://www.straighta.co.za>