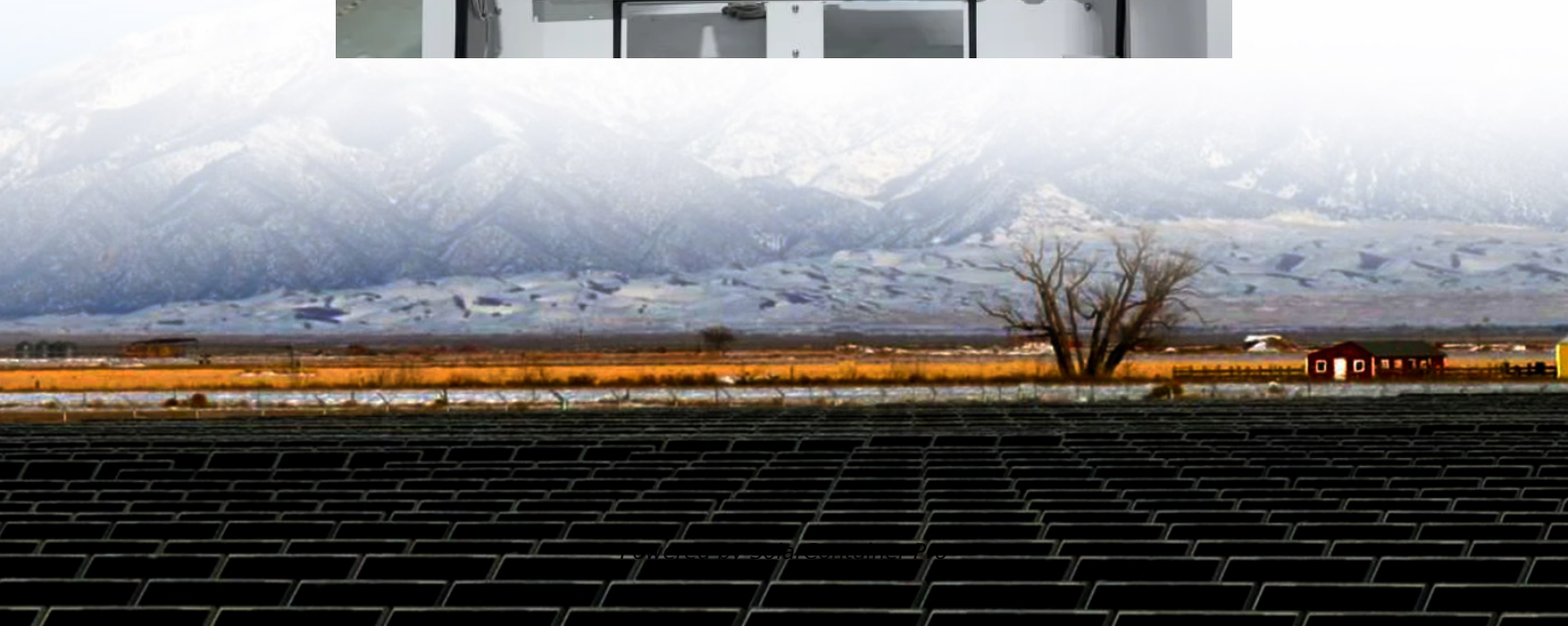


# **12v 30a lithium battery can be used with inverter**





## Overview

---

Yes, you can connect an inverter to a lithium battery. Lithium batteries, particularly Lithium Iron Phosphate (LiFePO<sub>4</sub>) batteries, are well-suited for use with inverters due to their high efficiency, lightweight design, and ability to deliver consistent power. What is a lithium battery for inverter?

Lithium offers unmatched performance, a longer lifespan, and better efficiency than traditional batteries. Whether you're setting up a home backup system, solar power solution, or mobile energy unit, this guide will walk you through everything you need to know about lithium batteries for inverters. Part 1.

Which battery should I use for my inverter?

When it comes to powering your inverter, there are a few alternative options to consider aside from lithium batteries. While lithium batteries have gained popularity due to their numerous advantages, they may not be the right choice for everyone. One alternative option is lead-acid batteries.

Are inverters compatible with lithium batteries?

Understanding the basics of inverters and different battery options sets the stage for exploring the compatibility between inverters and lithium batteries. Lithium batteries have revolutionized the world of inverters, offering a range of advantages that make them an ideal choice for powering these devices.

Can a solar inverter be used with a lithium battery?

Integrating a solar inverter with a lithium battery can take your renewable energy setup to the next level. This combination allows for better energy storage, improved efficiency, and greater resilience during power outages. LiFePO<sub>4</sub> batteries are particularly well-suited for solar applications because their thermal stability and long cycle life.

What voltage should a 12V inverter run on?



The input voltage of the inverter should match the battery voltage. (For example 12v battery for 12v inverter, 24v battery for 24v inverter and 48v battery for 48v inverter Summary What Will An Inverter Run & For How Long?

.

How do I install a lithium battery for inverter?

Understanding your inverter type is crucial to avoid potential issues down the line. The first step in installing a lithium battery for inverter with an existing inverter is to assess your current setup. This includes evaluating the condition of your inverter and ensuring it meets the necessary specifications for lithium-ion batteries.



## 12v 30a lithium battery can be used with inverter

---



### **AYUDH 12 Volt 100AH Lithium Ferro Phosphate Inverter Battery, ...**

AYUDH 12 Volt 100AH Lithium Ferro Phosphate Inverter Battery, Solar Compatible, Long Life Up to 20 Years, Works with Any Normal Inverter, 5 Years Warranty : Amazon : Home & ...

[WhatsApp](#)

### [Can I Connect Inverter to Lithium Battery?](#)

Yes, you can connect an inverter to a lithium battery. Lithium batteries, particularly Lithium Iron Phosphate (LiFePO4) batteries, are well-suited for use with inverters due to their ...

[WhatsApp](#)



### **Adding lithium's for inverter only but keep lead acid for 12V ...**

A simple charger would be fine for the lithium bank since you wouldn't be drawing 12V power from it for anything but the inverter. I'd think you'd want at least 30A.

[WhatsApp](#)



### [Can Lithium Batteries Work With Any Type of Inverter?](#)

When setting up solar energy systems or home energy storage, a common question arises: Are lithium batteries compatible with all inverters?



The short answer is no - proper ...

[WhatsApp](#)



### How Long Will A 12v Battery Last With An Inverter? Calculator

As a simple rule, to calculate how long a 12v deep-cycle battery will last with an inverter multiply battery amp-hours (Ah) by 12 to find watt-hours, and divide by the load watts ...

[WhatsApp](#)



### [Find Great Deals on inverter lithium battery 12v](#)

Bms 4S 12V 30A 40A 60A 18650 LIFEP04 Lithium Iron Phosphate Lithium Battery Protection Board With Balance Inverter High Current 4S BMS (3.2V rated LiFePO4 battery not for 3.7V ...

[WhatsApp](#)



### Calculate Battery Size For Any Size Inverter (Using Our Calculator)

To recharge your battery from time to time you would need the right size solar panel to do the job! Read the below article to find out the suitable solar panel size for your battery bank

[WhatsApp](#)



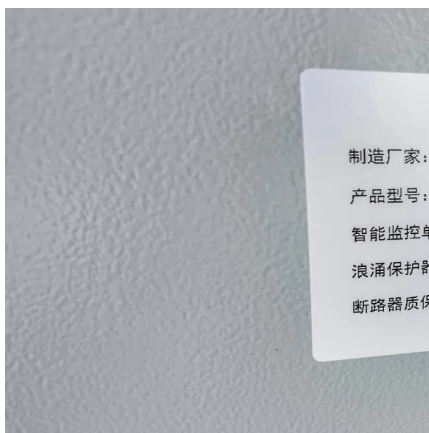




## 12V 30Ah Lithium Battery, 4000+ Cycles 12V LiFePO4 Battery Built-in 30A

XZNY 12V 30Ah lithium iron phosphate battery does not require regular maintenance and can be used immediately when fully charged.  
?WARRANTY SERVICE ...

[WhatsApp](#)



## [What 12V Lithium Batteries Can Power 3000W Inverters?](#)

To power a 3000W inverter effectively, selecting the right 12V lithium battery is crucial. Typically, a configuration of multiple lithium batteries is required to meet the power ...

[WhatsApp](#)

## Compatibility of Lithium-Ion Batteries with Existing Inverters

In summary, installing a lithium-ion battery with an existing inverter is not only feasible but also highly beneficial. From improved efficiency and performance to enhanced energy storage and ...

[WhatsApp](#)



## [Connecting 3000W 12V Pure Sine Wave Inverter to Battery](#)

If, for example, the 3000W Inverter was connected to 2 @ 100W Solar Panels, a Rover LI 20A MPPT Charge Controller and a 12V 200Ah Lithium Iron Phosphate Battery, and all I ever did ...

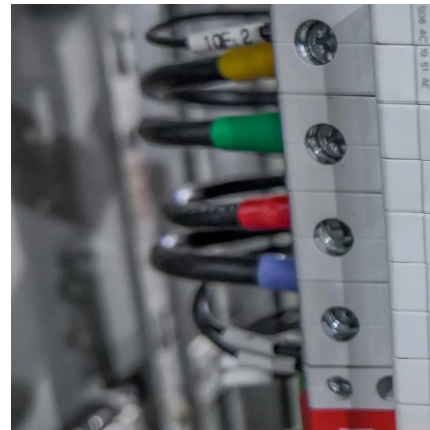
[WhatsApp](#)



### Using lithium's for inverter and lead acid for 12V systems

It is 26ft long and has a 30A hookup. We also have a soft start on AC. We stay gone for about 3-4 months and we do a lot of dry camping. We have two inverter gensets and ...

[WhatsApp](#)



## Contact Us

---

For catalog requests, pricing, or partnerships, please visit:  
<https://www.straighta.co.za>