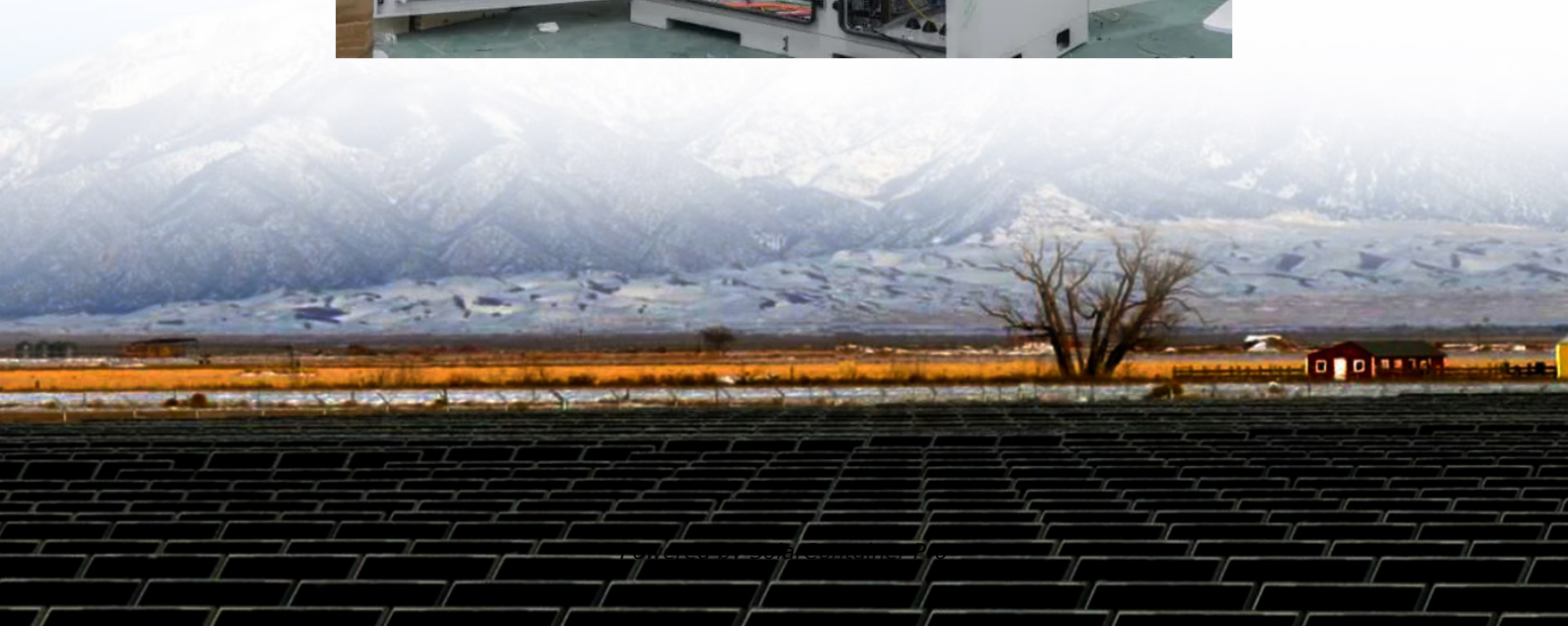


12v 100W solar panel parallel current





Overview

When wired in parallel, the 3 connected panels will have a voltage of 12 volts and a current of 24 amps (8A + 8A + 8A).



12v 100W solar panel parallel current



[Parallel Connected Solar Panels For Increased Current](#)

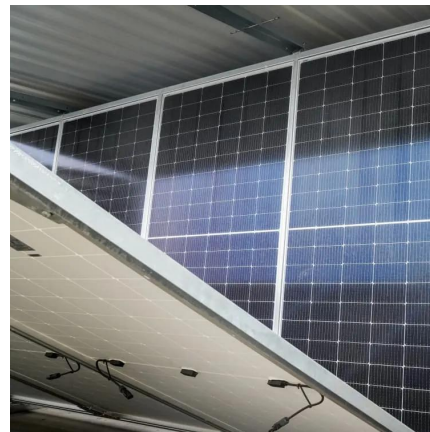
Photovoltaic solar panels generate a current when exposed to sunlight (irradiance) and we can increase the current output of an array by connecting the pv panels in parallel.

[WhatsApp](#)

How to Connect Multiple Solar Panels Together (Series vs Parallel)

If you're looking to increase your solar capacity, connecting multiple solar panels together is a great option. But should you wire them in series, parallel, or a combination of ...

[WhatsApp](#)



Solar Panel Series Vs Parallel: Wiring, Differences, And Your ...

In this tutorial, I'll show you how to wire solar panels in series and how to wire them in parallel. Once we've got that covered, I'll also explain the difference between these ...

[WhatsApp](#)



[How to Wire Two or More Solar Panels in Parallel](#)

In this page we will teach you how to wire two or more solar panels in parallel in order to increase the available current for our solar power system, keeping the rated voltage unchanged.



[WhatsApp](#)



Max Charging Current for AGM batteries w/ Victron MPPT 100,50

I am currently running 5 100W solar panels in parallel through my Victron 100,50 MPPT controller, connect to 3 12v, 125Ah AGM batteries connected in parallel. My batteries ...

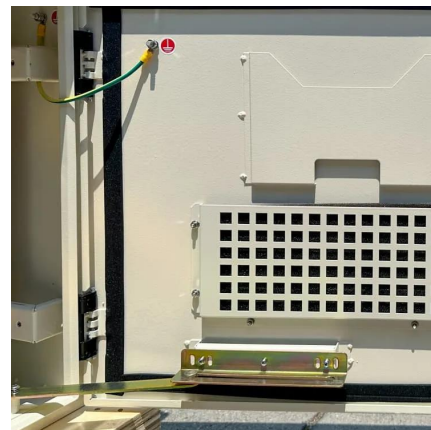
[WhatsApp](#)



[Ultimate Guide to Solar Panels in Series vs. Parallel](#)

Multiple solar panels can be connected in a system in two ways: series or parallel. This page tries to clarify the reasons behind the series and parallel wiring of solar panels, ...

[WhatsApp](#)



[How to Wire Solar Panel & Batteries in Parallel](#)

In a parallel configuration, the voltage remains constant at 12V (both for PV panels and batteries), while the current capacity increases. This configuration is ideal for systems using a 12V ...

[WhatsApp](#)





4 100 watt solar panels in parallel

For example, if you had four 100W panels hooked in a parallel connection, each panel produces about 5 Amps, so we would use this equation $(4 * 5 * 1.25) = 28.75$ Amps, so in this instance ...

[WhatsApp](#)



Low current levels from solar panels under clear skies?!?

We just set up your Renogy solar system for our RV. It consists of four Renogy 100W 12V Monocrystalline Solar Panels, wired (10AWG) in parallel to a Renogy Wanderer Li 30A 12V ...

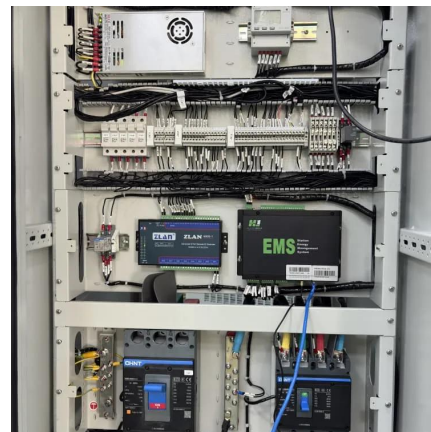
[WhatsApp](#)



Mixing solar panels - Dos and Don'ts

There are two main types of connecting solar panels - in series or in parallel. You connect solar panels in series when you want to get a higher voltage. If you, however, need to get higher ...

[WhatsApp](#)



Contact Us

For catalog requests, pricing, or partnerships, please visit:
<https://www.straighta.co.za>