

12-16v inverter





Overview

How many volts does a 16V inverter have?

There is no specific 16V inverter, so I purchased 3 different 12V-24V inverters which also took into account any voltage variation. I tested both the front/rear 16V outlets getting anywhere from 14.2V - 15.7V depending on the battery voltage.

What is a 12V inverter?

A 12V inverter is a device that converts 12V DC electric from your leisure batteries into the standardised AC current in your country of origin (120AC for the states, 240AC for the UK). It integrates into the electrical setup inside your campervan.

What is a 12V 220V power inverter?

This inverter 12V 220V generates 1000-watt continuous and 2000-watt surge power which can be applicable for AC household appliances or electrical devices during work trips, road trips, camping, and so on. This power inverter has full safety protections, built-in fuses, and a temperature-controlled cooling fan, to protect your devices from damage.

Should I use a separate 12V to 120V inverter?

Anyway, I would prefer using a separate 12 V to 120 V inverter because of the idle consumption. - Can you measure the idle consumption of the ANSEE power inverter. However, after a couple of minutes, the Tesla will go to sleep and the 12v socket will be turned off.

What is a high power 12 volt to 16 Volt DC/DC converter?

High power 12 volt to 16 volt DC/DC converters at low cost. Suitable for voltage stabilization of automobile electronics, special purpose UPS, etc. Sometimes you need 16 volts in a car or bus, or from a 12 volt battery, and these DC/DC converters are a good way to get it. These are Boost Converters



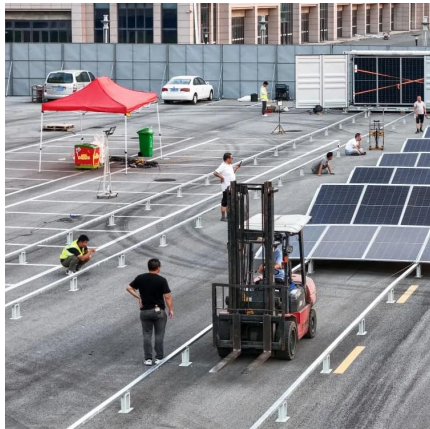
that have fixed output of 16VDC.

How much power does a 16V outlet get?

I tested both the front/rear 16V outlets getting anywhere from 14.2V - 15.7V depending on the battery voltage. The 3rd in the list below was the best w/120W of continuous power, had a separate power cord, and had cig-lighter extensions.



12-16v inverter



[Technaxx 1200 -Watt Power Inverter Lowes](#)

The TE16 Power Inverter from Technaxx® is a versatile inverter that can convert 12-volt DC battery power into standard 120-volt AC mains voltage, allowing users to connect a wide ...

[WhatsApp](#)

IT Series Pure Sine Wave Power Inverter With 12VDC Input

DC-AC inverter system designed with advanced power electronic and microprocessor technology TruWave technology generates pure sine wave AC power to operate and protect the most ...

[WhatsApp](#)



[12v input, 16v output 260W DC/DC converters 700 Watts](#)

These are Boost Converters that have fixed output of 16VDC. You can specify any output voltage from 13.8 to 16 volts with a minimum order of 20 pieces. They closely regulate ...

[WhatsApp](#)



[Hybrid Powerful 12v to 16v inverter for Varied Uses](#)

These devices are engineered to transform 12V DC power into 16V AC power, catering to a myriad of residential and commercial



applications. The adaptability of these inverters makes ...

[WhatsApp](#)



[Power Inverters for newer 16V Outlet Cars](#)

There is no specific 16V inverter, so I purchased 3 different 12V-24V inverters which also took into account any voltage variation. I tested both the front/rear 16V outlets getting anywhere from ...

[WhatsApp](#)



Step Up Voltage Converter Module DC 12V to DC 16V 8A 152W

[Efficient Voltage Conversion] This non-isolated step-up converter efficiently transforms DC 12V input to a stable DC 16V output with a high conversion efficiency of up to ...

[WhatsApp](#)



[12v input, 16v output 260W DC/DC converters 700 Watts](#)

These are Boost Converters that have fixed output of 16VDC. You can specify any output voltage from 13.8 to 16 volts with a minimum order of 20 pieces. They closely regulate ...

[WhatsApp](#)





300W Car Power Inverter 12V DC to 110V AC Car Converter ...

About this item ?Car Power Inverter 300W?Provides 300 Watts continuous, converting DC 12v to AC 110v-120v, featuring 2 AC outlets, and dual up to 2.4A USB fast charging ports ?Smart ...

[WhatsApp](#)



Växelriktare

En inverter benämns även som växelriktare eller omvandlare och omvandlar helt enkelt en spänning till en annan. Vanligast är att omvandla 12V till 230V, men det finns även inverters till ...

[WhatsApp](#)

[Testing the 16V low power socket : r/TeslaModel3](#)

Or is the 16V low power socket because the only battery onboard is 16V? There is another option of wiring in series a 16V to 12V buck converter but I didn't want to take apart my interior to do ...

[WhatsApp](#)



[Having trouble finding 16V inverter for my 2022 model Y](#)

Most reasonable quality inverters will handle 16v just fine. There's nothing really special about inverter circuitry for handling 12v vs 16v, and most car electrical systems are ...

[WhatsApp](#)



[Having trouble finding 16V inverter for my 2022 model Y](#)

Most reasonable quality inverters will handle 16v just fine. There's nothing really special about inverter circuitry for handling 12v vs 16v, and most car electrical systems are running around ...

[WhatsApp](#)



Car Power Inverter TE16, 3X Plugs, 2X USB Ports, TÜV ...

The Technaxx TE16 is a versatile inverter that can convert 12V DC battery power into standard 120V AC mains voltage, allowing users to connect a wide variety of gadgets ...

[WhatsApp](#)

Contact Us

For catalog requests, pricing, or partnerships, please visit:
<https://www.straighta.co.za>